



SAXX

th  
s  
s

***CHALLENGE***

***EVERYDAY  
DISCOMFORT***

---

In 2006, our founder asked: why can't men's underwear be better? After spending hours on a fishing trip in a clammy ocean suit, he wondered if there was a way to fend off the uncomfortable effects of friction down south.

The answer was SAXX. Simply put, this is underwear designed differently. Our patented technologies move with you and deliver revolutionary comfort every step of the way.

Just like our founder challenged the status quo of the underwear industry, we believe in challenging the world around us to be better. Our underwear was designed to support guys in doing just that.

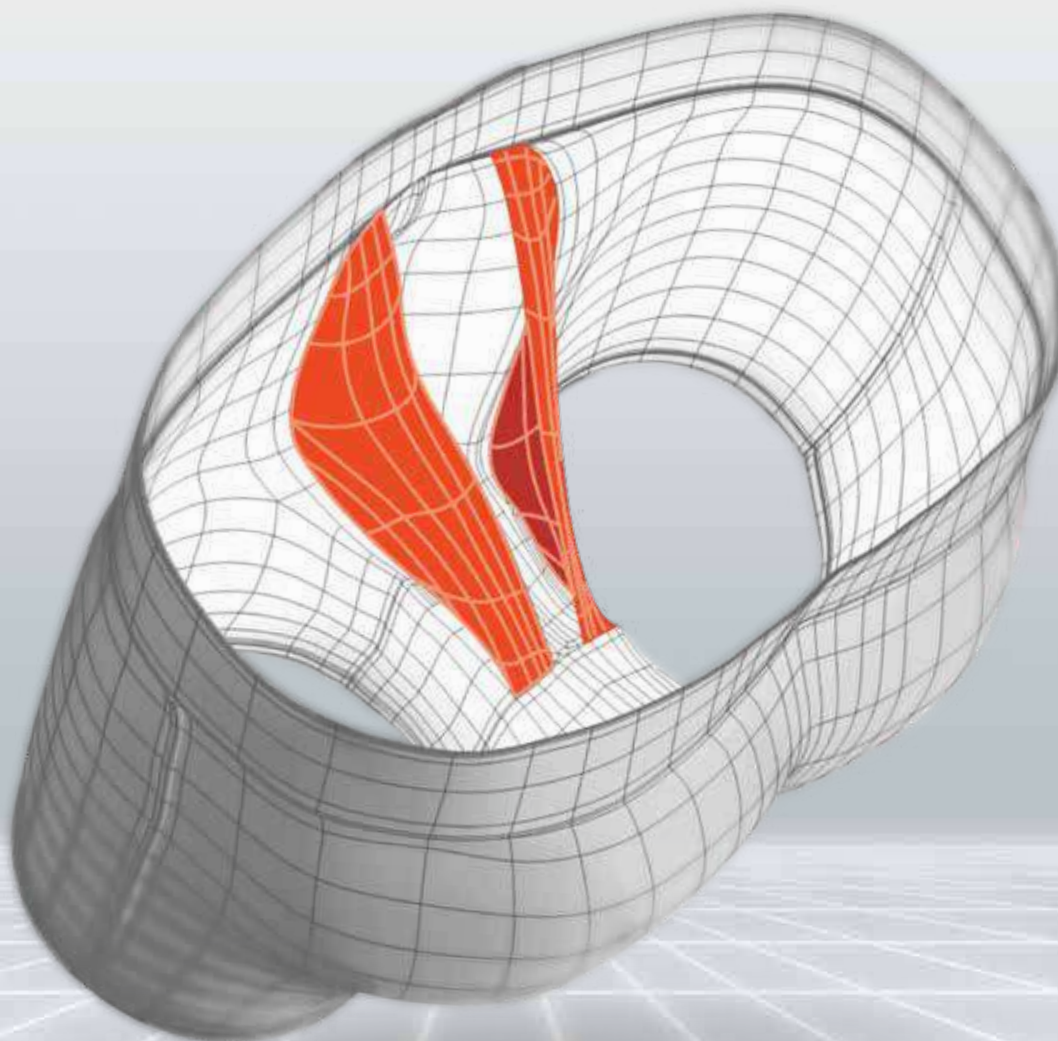




// EXPERIENCE THE

# **BALLPARK POUCH™**

What you put in your pants is important. That's why each pair comes equipped with the BallPark Pouch™. Designed to reduce friction, this patented piece of internal tech keeps your man-parts in place.



**\_01**

Friction-free comfort  
and breathability

**\_02**

Provides natural support  
and movement

**\_03**

Made with the male  
anatomy in mind



<b>_08</b>	USE CASE
<b>_10</b>	SWIM
<b>_20</b>	ADVENTURE
<b>_32</b>	SPORT
<b>_56</b>	EVERYDAY
<b>_90</b>	MULTIPACKS
<b>_104</b>	LINE OVERVIEW
<b>_116</b>	FIT GUIDE
<b>_118</b>	FABRICS
<b>_120</b>	DISPLAYS



# ***USE*** ***CASE***

Each of our core collections has been categorized by a particular end-use activity. Customers will find performance functionality throughout.







## | **EVERYDAY**

Using super-soft, moisture-wicking fabrics, this day-to-day category offers unparalleled support for all-day wear.



## | **ADVENTURE**

Outdoor-driven performance underwear, designed for hiking, biking and cold-weather workouts.



## | **SPORT**

Purpose-built bottoms designed with your movement in mind. Our Sport category includes performance underwear and 2N1 athletic shorts.



## | **SWIM**

Designed for quick dips and long beach days, our swim shorts feature a quick-dry liner and the **BallPark Pouch™**.







Whether it's a beach bash or beyond, our swim shorts are sure to make a massive splash. Featuring our integrated BallPark Pouch™ these styles will leave you chafe free and ready to go all day long.



SWIM



# OH BUOY

**NEW**

Whether it's a beach bash or beyond, the all-new Oh Buoy 2N1 Swim Short is set to make a massive splash. Combining other-worldly prints and exceptional comfort, this swim style is primed for your next pool party. Featuring a 4-way stretch shell with an integrated ultra-light mesh liner and the BallPark Pouch™, Oh Buoy offers unreal support in and out of water - meaning you can go from beach to brewery without a second thought. Suit up ASAP.

**SLIM FIT LINER****Shell: 88% Polyester / 12% Elastane****Liner: 87% Polyester / 13% Elastane**

## KEY FEATURES

Shell:

- Adjustable drawcord waist
- Rear patch pocket with security key loop
- Quick-drain pockets
- 4-way stretch
- Fade-resistant to chlorine & saltwater
- Quick dry

Liner:

- Easy access stash pocket on leg
- Odor resistant
- Quick dry

**SXSW03L-CWT****BallPark Pouch™****Three-D Fit™****Flat Out Seams™**

**SHELL** - 5" inseam - **LINER** - 5" inseam

FEB 15



**AZURE/BLACK**

2N1 VOLLEY 5"  
SXSW03L-AZB | S-XXL  
U7000 | C8000



**BLACK**

2N1 VOLLEY 5"  
SXSW03L-BLK | S-XXL  
U7000 | C8000



**BLUE CUT WORK TROPICAL**

2N1 VOLLEY 5"  
SXSW03L-CWT | S-XXL  
U7000 | C8000

**SHELL** - 5" inseam - **LINER** - 5" inseam

FEB 15



**BLUE SUNBREAK**

2N1 VOLLEY 5"  
SXSW03L-SBB | S-XXL  
U7000 | C8000



● **GREEN NO BAD DAYS**

2N1 VOLLEY 5"  
SXSW03L-NGB | S-XXL  
U7000 | C8000



**YELLOW REMOTE ISLAND**

2N1 VOLLEY 5"  
SXSW03L-YRM | S-XXL  
U7000 | C8000

● *Marketing Highlight*



OH BUOY

CORE

SHELL - 7" inseam - LINER- 5" inseam

FEB 15

ARTIST SERIES - NATHAN MCKEE



**AZURE/BLACK**

2N1 VOLLEY 7"  
SXSW04L-AZB | S-XXL  
U7000 | C8000



**BLACK**

2N1 VOLLEY 7"  
SXSW04L-BLK | S-XXL  
U7000 | C8000



● **BLUE DAWN PATROL**

2N1 VOLLEY 7"  
SXSW04L-DPB | S-XXL  
U7000 | C8000



**FIJI ASTRO SURF AND TURF**

2N1 VOLLEY 7"  
SXSW04L-FST | S-XXL  
U7000 | C8000

SHELL - 7" inseam - LINER- 5" inseam

FEB 15



● **MULTI RIPPED CAMO**

2N1 VOLLEY 7"  
SXSW04L-RCM | S-XXL  
U7000 | C8000



**NAVY CHOMPERS**

2N1 VOLLEY 7"  
SXSW04L-CHN | S-XXL  
U7000 | C8000



**PINK DISCO JUNGLE**

2N1 VOLLEY 7"  
SXSW04L-DJP | S-XXL  
U7000 | C8000

● *Marketing Highlight*





# BETAWAVE

**NEW**

In and out of the water, the new Betawave 2N1 Boardie is all about making waves. Meet the first-ever board short with an integrated liner equipped with the BallPark Pouch™. Featuring a 4-way stretch, fixed-waist shell, we've integrated an ultra-light mesh liner, maximizing omni-directional movement, and chafe-free functional support. Outfitted with hand pockets and quick dry materials with great coverage, the Betawave takes you from big waves to the beach to the bar, without missing a beat.

**SLIM FIT LINER****Shell: 88% Polyester / 12% Elastane****Liner: 87% Polyester / 13% Elastane**

## KEY FEATURES

Shell:

- Fixed waist with low-profile fly
- Rear patch pocket with security key loop
- Quick-drain hand pockets
- Fade-resistant to chlorine & saltwater
- 4-way stretch
- Quick dry

Liner:

- Stash pocket on leg
- Odor resistant
- Quick dry

**SXSW02L-BRG***BallPark Pouch™**Three-D Fit™**Flat Out Seams™*



OUTSEAM - 17" - LINER- 5" inseam

FEB 15



**BLACK**

2N1 BOARDIE 17"  
SXSW01L-BLK | 28-40  
U8000 | C9000



**GREEN JUNGLE CAMO**

2N1 BOARDIE 17"  
SXSW01L-GJC | 28-40  
U8000 | C9000



**AZURE/TWILIGHT**

2N1 BOARDIE 17"  
SXSW01L-AZT | 28-40  
U8000 | C9000

OUTSEAM - 17" - LINER- 5" inseam

FEB 15



**BLACK FLIP FLOP STRIPE**

2N1 BOARDIE 17"  
SXSW01L-FFB | 28-40  
U8000 | C9000



**BLUE ASTRO SURF & TURF**

2N1 BOARDIE 17"  
SXSW01L-ASB | 28-40  
U8000 | C9000



● **BLUE DISCO JUNGLE**

2N1 BOARDIE 17"  
SXSW01L-DJB | 28-40  
U8000 | C9000

● *Marketing Highlight*



BETAWAVE



CORE

OUTSEAM - 19" - LINER - 5" inseam

FEB 15



**BLACK**

2N1 BOARDIE 19"  
SXSW02L-BLK | 28-40  
U8000 | C9000



● **MULTI SUPER STRIPE**

2N1 BOARDIE 19"  
SXSW02L-MSS | 28-40  
U8000 | C9000



**BLACK WAVE STREAK**

2N1 BOARDIE 19"  
SXSW02L-WBS | 28-40  
U8000 | C9000

OUTSEAM - 19" - LINER - 5" inseam

FEB 15

ARTIST SERIES - NATHAN MCKEE



**RED HIBISCUS**

2N1 BOARDIE 19"  
SXSW02L-HBR | 28-40  
U8000 | C9000



**TWILIGHT/AZURE**

2N1 BOARDIE 19"  
SXSW02L-TWA | 28-40  
U8000 | C9000

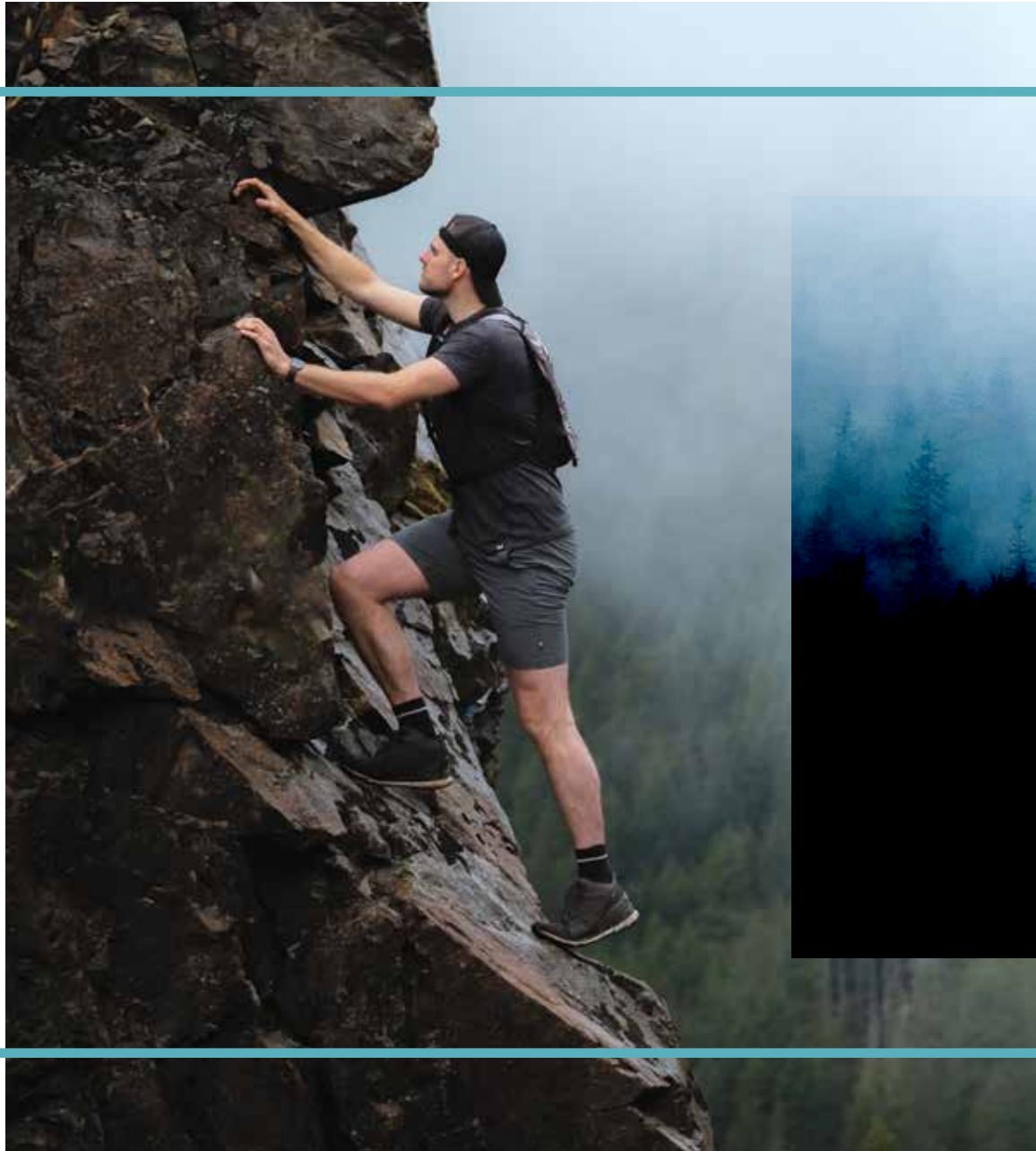


**BLUE RIDING GIANTS**

2N1 BOARDIE 19"  
SXSW02L-BRG | 28-40  
U8000 | C9000

● *Marketing Highlight*









Designed for the great outdoors, our Adventure category delivers backcountry comfort when you need it most.



# HOT SHOT

NEW

Say hello to Hot Shot – an all-new boxer brief featuring our proprietary DropTemp™ technology. Designed to beat the heat (scratch that – completely crush it), Hot Shot uses a highly breathable, quick-dry technology that amplifies your body's natural evaporative cooling capacity. Along with strategically placed mesh panels that increase airflow in high heat zones, this cooling system eclipses anything else you've experienced. Built for a wide range of sport and outdoor activities, DropTemp™ makes a day-hike through Death Valley feel like a walk in the park.

DROPTMP™  
COOLING TECHNOLOGY

RELAXED FIT | FLY

**85% Recycled Polyester / 15% Elastane**

**Insets: 88% Polyester, 12% Elastane**

## KEY FEATURES

- Active cooling system
- Rapid moisture transport
- Highly breathable
- High heat zone mesh insets
- Quick dry
- Odor resistant

BallPark Pouch™

Three-D Fit™

Flat Out Seams™

Boxer Brief



SXBB09F-MTW

FEB 15

**BLACK HEATHER**

**BOXER BRIEF**  
**SXBB09F-BLH | S-XXL**  
U3800 | C4000

**DARK DENIM HEATHER**

**BOXER BRIEF**  
**SXBB09F-DDH | S-XXL**  
U3800 | C4000

**NAVY POLARBEAR RESORTWEAR**

**BOXER BRIEF**  
**SXBB09F-PBR | S-XXL**  
U3800 | C4000

**ORANGE BLAZE HEATHER**

**BOXER BRIEF**  
**SXBB09F-OBH | S-XXL**  
U3800 | C4000



FEB 15



**BLUE ICEBERG STRIPE**

**BOXER BRIEF**  
**SXBB09F-IBS | S-XXL**  
U3800 | C4000



● **MULTI TIDAL WAVE**

**BOXER BRIEF**  
**SXBB09F-MTW | S-XXL**  
U3800 | C4000

● *Marketing Highlight*



NEW

# HOT SHOT TECH TEE

You didn't think DropTemp™ stopped there did you? Not even close. Seek the heat in the all-new Hot Shot Tech Tee. Built to keep you cool, this tech tee features a highly breathable, quick-dry technology that amplifies your body's natural evaporative cooling capacity. Featuring non-chafing Flat Out Seams™ that reduce on-body irritation, we've placed mesh panels at the underarm and sides to increase air flow. Whether you're hiking, biking, or working out at home, Hot Shot is in its element when the heat is on.

DROPTEMP™  
COOLING TECHNOLOGY

RELAXED FIT

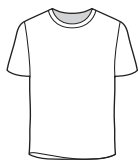
**85% Recycled Polyester / 15% Elastane**

**Insets: 88% Polyester, 12% Elastane**

## KEY FEATURES

- Active cooling system
- Rapid moisture transport
- Highly breathable
- High heat zone mesh insets
- Quick dry
- Odor resistant

Flat Out Seams™



Crew Neck



SXSC09-OBH



FEB 15

**BLACK HEATHER**

SHORT SLEEVE  
SXSC09-BLH | S-XXL  
U5000 | C6000

**MALIBU HEATHER**

SHORT SLEEVE  
SXSC09-MBH | S-XXL  
U5000 | C6000

**ORANGE BLAZE HEATHER**

SHORT SLEEVE  
SXSC09-OBH | S-XXL  
U5000 | C6000

● Marketing Highlight

# QUEST

Cut from a quick-dry, wash-and-go fabric with odor resistance, this low-maintenance pair is like your favorite adventure partner: comfortable, supportive, and up for anything.

SLIM FIT | FLY

77% nylon / 14% elastane / 9% polyester

## KEY FEATURES

- Moisture wicking
- Odor resistant
- Quick dry micro-mesh

BallPark Pouch™

Three-D Fit™

Flat Out Seams™

Boxer Brief



Long Boxer Brief



SXBB70F-MOB

FEB 15

NEW

**BLACK MOUNTAINSCAPE****BOXER BRIEF**SXBB70F-MOB | S-XXL  
U3200 | C3500**MIDNIGHT BLUE II****BOXER BRIEF**SXBB70F-MB2 | XS-XXL  
U3200 | C3500**GREY GRIZZLY GRAIN****BOXER BRIEF**SXBB70F-GGG | XS-XXL  
U3200 | C3500

FEB 15

**BLACK II****BOXER BRIEF**SXBB70F-BL2 | XS-XXL  
U3200 | C3500**LONG BOXER BRIEF**SXLL70F-BL2 | S-XXL  
U3400 | C3600**DARK CHARCOAL II****BOXER BRIEF**SXBB70F-DC2 | XS-XXL  
U3200 | C3500**LONG BOXER BRIEF**SXLL70F-DC2 | S-XXL  
U3400 | C3600



FEB 15

NEW



2 PACK

**SUNRISE STRIPE/BLACK II**

**BOXER BRIEF**  
**SXPP2Q-SBI | S-XXL**  
U5695 | C6295



2 PACK

**BLACK/DK CHARCOAL II**

**BOXER BRIEF**  
**SXPP2Q-BD2 | S-XXL**  
U5695 | C6295



FEB 15

**BLUE CUT WORK TROPICAL****BOXER BRIEF****SXBB70F-CWT | S-XXL**  
U3200 | C3500**GREEN SUNRISE STRIPE****BOXER BRIEF****SXBB70F-GSS | S-XXL**  
U3200 | C3500**PINK SAIL AWAY****BOXER BRIEF****SXBB70F-SPW | S-XXL**  
U3200 | C3500







From burpees to bench press, proper support goes a long way. Beef up your gym bag with the very best in performance underwear.



SPORT

# PILOT

Featuring a feather-weight shell with minimal seams, bonded hems and a bounce-free stash pocket, Pilot is the lightest pair of running shorts you've ever worn. Add a breathable liner with the BallPark Pouch™ and you have one unbelievably comfortable path to victory.

**SEMI-COMPRESSION FIT LINER**

**Shell: 100% polyester**

**Liner: 77% nylon / 14% elastane / 9% polyester**

## KEY FEATURES

Shell:

- Super-light, stretch-enhanced
- Reflective details for safety
- Bounce-free stash pocket

Quest liner:

- Quick dry micro-mesh
- Odor resistant
- Moisture wicking
- Hidden stash pocket

*BallPark Pouch™*

*Three-D Fit™*

*Flat Out Seams™*



SXRU29-DDN

**SHELL** - 7" inseam - **LINER** - 5" inseam

FEB 15



**BLACK**

2N1 SHORT

SXRU29-BLK | S-XXL

U6800 | C7400



**DARK DENIM**

2N1 SHORT

SXRU29-DDN | S-XXL

U6800 | C7400

BOUNCE-FREE BACK POCKET



QUEST LINER





# KINETIC SPORT

Meet your grab-and-go athletic short, a 2N1 creation designed to deliver maximum comfort before, during, and after activity. What makes Kinetic 2N1 Sport ready for anything? A Kinetic liner – featuring the BallPark Pouch™ – seamlessly integrated into a cling-and-wrinkle-free shell.

SEMI-COMPRESSION FIT LINER

**Shell: 100% polyester**

**Liner: 90% nylon / 10% elastane**

## KEY FEATURES

Shell:

- Quick-dry stretch-enhanced fabric
- On-seam pockets & security zip pocket
- 360-degree reflective details for safety
- SAXX waistband with integrated drawcord

Kinetic liner:

- Moisture wicking
- Odor resistant
- Breathable

BallPark Pouch™

Three-D Fit™

Flat Out Seams™



SXKS27-BLK

**SHELL** - 7" inseam - **LINER** - 5" inseam

FEB 15



**BLACK**

2N1 SHORT  
SXKS27-BLK | S-XXL  
U7500 | C7900



**DARK CHARCOAL**

2N1 SHORT  
SXKS27-DCH | S-XXL  
U7500 | C7900



**VELVET BLUE**

2N1 SHORT  
SXKS27-BSH | S-XXL  
U7500 | C7900

SECURITY ZIP POCKET



REFLECTIVE DETAIL



KINETIC LINER



# KINETIC TRAIN

When guys told us they were cutting the liners out of their athletic shorts and wearing SAXX instead, we listened. These quick dry, all-around training shorts feature Kinetic liners and the BallPark Pouch™ with our much-loved waistband slightly exposed. Kinetic Train features a longer leg than our Kinetic Sport short, providing more coverage during your workout.

SEMI-COMPRESSION FIT LINER

**Shell: 100% polyester**

**Liner: 90% nylon / 10% elastane**

## KEY FEATURES

Shell:

- Quick-dry stretch-enhanced fabric
- On-seam pockets & security zip pocket
- Integrated SAXX waistband with drawcord
- Reflective SAXX logo

Kinetic liner:

- Moisture wicking
- Odor resistant
- Breathable

BallPark Pouch™

Three-D Fit™

Flat Out Seams™



SXGS28-DCH



**SHELL** - 8" inseam - **LINER** - 9" inseam

FEB 15



**BLACKOUT**

2N1 SHORT  
SXGS28-BLO | S-XXL  
U7800 | C8300



**DARK CHARCOAL**

2N1 SHORT  
SXGS28-DCH | S-XXL  
U7800 | C8300



**VELVET BLUE**

2N1 SHORT  
SXGS28-BSH | S-XXL  
U7800 | C8300

SECURITY ZIP POCKET



KINETIC LINER



# SPORT MESH

Made from a lightweight micro-mesh, Sport Mesh is designed to reach beyond the weight room, providing comfort during everyday activities. Moisture wicking and odor resistant, this boxer brief does the job for just about anything.

SLIM FIT | FLY

89% polyester / 11% elastane

## KEY FEATURES

- Moisture wicking
- Odor resistant
- Breathable

*BallPark Pouch™*

*Three-D Fit™*

*Flat Out Seams™*

Boxer Brief



SXBB12F-GRA



FEB 15

**BLACK**

**BOXER BRIEF**  
**SXBB12F-BLK | XS-XXL**  
 U2500 | C2700

**GRAPHITE**

**BOXER BRIEF**  
**SXBB12F-GRA | XS-XXL**  
 U2500 | C2700

FEB 15

**2 PACK**

**BLACK/GRAPHITE**  
**BOXER BRIEF**  
**SXPP2M-BGR | S-XXL**  
 U3995 | C4795

**2 PACK**

**NAVY/CITY BLUE**  
**BOXER BRIEF**  
**SXPP2M-NCT | S-XXL**  
 U3995 | C4795



FEB 15



2 PACK

**MALIBU/NAVY**

**BOXER BRIEF**  
**SXPP2M-MLN | S-XXL**  
 U3995 | C4795



2 PACK

**BLACK LIME WB/GRAPHITE**

**BOXER BRIEF**  
**SXPP2M-LBG | S-XXL**  
 U3995 | C4795

FEB 15



2 PACK

**GRAPHITE VERMILLION WB/BLACK**

**BOXER BRIEF**  
**SXPP2M-GVM | S-XXL**  
 U3995 | C4795





# VOLT

Bright, bold, and exceptionally breathable, Volt is a performance powerhouse designed to increase airflow when you're active. Constructed using a pin-dot mesh, this pair counteracts odor, wicks sweat, and provides premium support for your man-parts. Featuring a wide range of photorealistic prints, made possible by a sublimation printing process, you'll be packing some serious personality in your pants.

SLIM FIT | NO FLY

88% polyester / 12% elastane

## KEY FEATURES

- Moisture wicking
- Odor resistant
- Breathable micro-mesh

BallPark Pouch™

Three-D Fit™

Flat Out Seams™



Boxer Brief



SXBB29-ACQ



FEB 15

NEW

**CHOMPERS****BOXER BRIEF****SXBB29-CHO | XS-XXL**

U3300 | C3500

**HAZY CAMO****BOXER BRIEF****SXBB29-HZC | XS-XXL**

U3300 | C3500

**ARMCHAIR QUARTERBACK****BOXER BRIEF****SXBB29-ACQ | XS-XXL**

U3300 | C3500

FEB 15

**AMERICAN PILSNER****BOXER BRIEF****SXBB29-AMP | XS-XXL**

U3300 | C3500

**CANADIAN LAGER****BOXER BRIEF****SXBB29-CDL | XS-XXL**

U3300 | C3500

**SPORT NUT****BOXER BRIEF****SXBB29-SPN | XS-XXL**

U3300 | C3500

DEC 15

**BIG SURF**

BOXER BRIEF  
SXBB29-SUB | XS-XXL  
U3300 | C3500

**FIGHTING FISH**

BOXER BRIEF  
SXBB29-FGF | XS-XXL  
U3300 | C3500

FEB 15

**BLUE DORADO PARTAY**

BOXER BRIEF  
SXBB29-DPB | XS-XXL  
U3300 | C3500

**GOING BANANAS**

BOXER BRIEF  
SXBB29-GOB | XS-XXL  
U3300 | C3500

FEB 15

**GRADIENT LANDSCAPE**

BOXER BRIEF  
SXBB29-GRL | XS-XXL  
U3300 | C3500

**MIRROR LAKE**

BOXER BRIEF  
SXBB29-MIL | XS-XXL  
U3300 | C3500

ARTIST SERIES - NATHAN MCKEE

● **RIDING GIANTS**

BOXER BRIEF  
SXBB29-RDG | XS-XXL  
U3300 | C3500

APR 15

**FLOATIE SNACKS****BOXER BRIEF**SXBB29-FLN | XS-XXL  
U3300 | C3500**PINEAPPLE EXPRESS****BOXER BRIEF**SXBB29-PNE | XS-XXL  
U3300 | C3500

FEB 15

**2 PACK****TOURIST CAMO/BLACK****BOXER BRIEF**SXPP2T-TCB | XS-XXL  
U5695 | C5995**2 PACK****PURPLE DORADO PARTAY/BLACK****BOXER BRIEF**SXPP2T-PDB | XS-XXL  
U5695 | C5995



# KINETIC HD

We took your favorite performance pair and fine-tuned all of its features. Meet Kinetic HD: a bigger, faster, stronger style than it ever was before. Made from 4-way stretch fabric, this Semi-Compression pair is designed for a wide range of sport and fitness activities. Equipped with an evolved version of the BallPark Pouch™ - which has been modified to improve fit and function - guys will experience an elevated level of comfort.

SEMI-COMPRESSION FIT | NO FLY

88% nylon / 12% elastane

GFS: 59% nylon/ 28% elastane/ 13% polyester

## KEY FEATURES

- Moisture wicking
- Odor resistant
- Breathable micro-mesh

BallPark Pouch™

Three-D Fit™

Flat Out Seams™

Boxer Brief



Long Boxer Brief



SXBB32-RED



FEB 15

**BLACK/VERMILLION****BOXER BRIEF****SXBB32-BVR | S-XXL**  
U3800 | C4000**BLACKOUT****BOXER BRIEF****SXBB32-BLO | XS-XXL**  
U3800 | C4000**GREY FEED STRIPE****BOXER BRIEF****SXBB32-GFS | S-XXL**  
U3800 | C4000

FEB 15

**NAVY/CITY BLUE****BOXER BRIEF****SXBB32-CIN | S-XXL**  
U3800 | C4000**RED****BOXER BRIEF****SXBB32-RED | S-XXL**  
U3800 | C4000**BLACK****LONG BOXER BRIEF**  
**SXLL32-BLO | S-XXL**  
U4000 | C4200



FEB 15

NEW

**BLACK STATIC LANDSCAPE**

**BOXER BRIEF**  
**SXBB32-SLB | S-XXL**  
U3800 | C4000



**LONG BOXER BRIEF**  
**SXLL32-SLB | S-XXL**  
U4000 | C4200

**BLUE SKY EXPLOSION**

**BOXER BRIEF**  
**SXBB32-SBE | S-XXL**  
U3800 | C4000



**LONG BOXER BRIEF**  
**SXLL32-SBE | S-XXL**  
U4000 | C4200





# **HYPERDRIVE**

Designed for high-intensity training, Hyperdrive is a Compression Fit tour de force featuring our new BallPark Pouch™ technology. Having perfected both fit and function, athletes will experience an elevated level of support, as well as increased coverage and stability. Constructed using a durable nylon performance mesh, with placement panels at the center back for breathability, this long boxer brief moves moisture away from the skin and is actively odor resistant.

**COMPRESSION FIT | NO FLY**

**80% nylon/ 20% elastane**

**Mesh panels: 88% nylon/ 12% elastane**

## **KEY FEATURES**

- Moisture wicking
- Odor resistant
- Hidden waistband stash pocket

*BallPark Pouch™*

*Three-D Fit™*

*Flat Out Seams™*

Long Boxer Brief



**FEB 15**

**BLACKOUT**

**LONG BOXER BRIEF**  
**SXLL29-BLO | XS-XXL**  
**U5000 | C5200**



# AERATOR TEE

Featuring a Relaxed Fit and underarm gusset for unrestrictive movement, the Aerator Tee is an essential item in any athlete's arsenal. Made using a performance fabric, this tee provides great stretch without any spandex. Pair with our 2N1, Kinetic, and Hyperdrive collections for a head-to-toe SAXX experience. Available in a short and long sleeve. Updated this season with UPF 25 protection on all colorways.

RELAXED FIT | CREW NECK

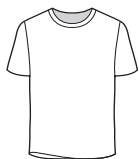
100% polyester

## KEY FEATURES

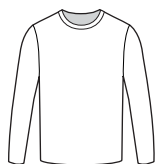
- UPF 25
- Moisture wicking
- Breathable
- Quick dry
- Odor resistant

Three-D Fit™

Flat Out Seams™



Short Sleeve



Long Sleeve



SXLC14-FJH

NEW



**BLACK WASHED STRIPE**



**SHORT SLEEVE**  
**SXST14-WSB | S-XXL**  
U4500 | C5000



**LONG SLEEVE**  
**SXLC14-WSB | S-XXL**  
U5000 | C6000

NEW



**RACER BLUE HEATHER**



**SHORT SLEEVE**  
**SXST14-RBH | S-XXL**  
U4500 | C5000



**LONG SLEEVE**  
**SXLC14-RBH | S-XXL**  
U5000 | C6000

NEW



**FIJI HEATHER**



**SHORT SLEEVE**  
**SXST14-FJH | S-XXL**  
U4500 | C5000



**LONG SLEEVE**  
**SXLC14-FJH | S-XXL**  
U5000 | C6000









From conference calls to brewery crawls, our Everyday styles provide the kind of comfort and support you can always count on.

# DAYTRIPPER

Whether it's weekends away or coffee on campus - don't trip - Daytripper does it all. Merging what people love about natural fibers (soft hand feel, comfort, breathability) into a synthetic fabric that delivers wicking and durability, Daytripper is designed for guys on the go.

RELAXED FIT | FLY

97% polyester / 3% elastane

## KEY FEATURES

- Moisture wicking
- Odor resistant

BallPark Pouch™

Three-D Fit™

Flat Out Seams™

Boxer Brief



SXBB11F-SBT

FEB 15

NEW



**BLACK OPS CAMO**

BOXER BRIEF  
SXBB11F-OCB | S-XXL  
U2500 | C2700



**BLUE SPORTCORE STRIPE**

BOXER BRIEF  
SXBB11F-SBT | XS-XXL  
U2500 | C2700



**BLACK**

BOXER BRIEF  
SXBB11F-BLK | XS-XXL  
U2500 | C2700

FEB 15



**BLACK POLKA CAMO**

BOXER BRIEF  
SXBB11F-PBC | S-XXL  
U2500 | C2700



**GREY HEATHER**

BOXER BRIEF  
SXBB11F-GRA | S-XXL  
U2500 | C2700



**NAVY HEATHER**

BOXER BRIEF  
SXBB11F-NVY | XS-XXL  
U2500 | C2700



DAYTRIPPER

CORE



FEB 15



2 PACK

**BLACK/GREY HEATHER****BOXER BRIEF**  
**SXPP2A-BGR | S-XXL**  
U3995 | C4795

2 PACK

**BLACK/CITY BLUE HEATHER****BOXER BRIEF**  
**SXPP2A-BRB | S-XXL**  
U3995 | C4795

FEB 15



3 PACK

**BLACK****BOXER BRIEF**  
**SXPP3B-BLK | S-XXL**  
U5995 | C6995



FEB 15



3 PACK

NAVY

BOXER BRIEF

SXPP3B-NVY | S-XXL

U5995 | C6995

FEB 15



3 PACK

GREY HEATHER

BOXER BRIEF

SXPP3B-GRA | S-XXL

U5995 | C6995

FEB 15



3 PACK

**BLACK/GREY/NAVY****BOXER BRIEF****SXPP3B-BGN | S-XXL**

U5995 | C6995

FEB 15

**BLUE POP DOG****BOXER BRIEF****SXBB11F-PDB | S-XXL**

U2500 | C2700

**MULTI DAZED & CONFUSED****BOXER BRIEF****SXBB11F-DZM | S-XXL**

U2500 | C2700

**NAVY DEATH VALLEY CAMO****BOXER BRIEF****SXBB11F-DVN | S-XXL**

U2500 | C2700

**TEAL VAPORWAVE CHEETAH****BOXER BRIEF****SXBB11F-VCT | S-XXL**

U2500 | C2700



APR 15

**MULTI MIAMI NICE****BOXER BRIEF****SXBB11F-MNM | S-XXL**  
U2500 | C2700**YELLOW PEACENIK****BOXER BRIEF****SXBB11F-PCY | S-XXL**  
U2500 | C2700

FEB 15

**2 PACK****BOARDWALK TIE DYE/BLACK****BOXER BRIEF****SXPP2A-B0B | S-XXL**  
U3995 | C4795**2 PACK****SKULLGYLE/BLACK****BOXER BRIEF****SXPP2A-SKB | S-XXL**  
U3995 | C4795



# UNDERCOVER

When we asked what the cotton underwear of tomorrow could look like, Undercover was the answer. Using a super-soft, cotton-Modal® blend with moisture-wicking qualities, Undercover is designed to tackle all of today's challenges.

SLIM FIT | FLY

57% cotton / 38% Modal® / 5% elastane

## KEY FEATURES

- Moisture wicking
- Naturally odor resistant

BallPark Pouch™

Three-D Fit™

Flat Out Seams™

Boxer Brief



Trunk



Brief



SXBB19F-RSB



FEB 15

NEW

**BLACK BOULDER CAMO****BOXER BRIEF****SXBB19F-B0C | S-XXL**

U2800 | C2900

**BLACK REFLECTIVE STRIPE****BOXER BRIEF****SXBB19F-RSB | S-XXL**

U2800 | C2900

**BLUE FLAG STRIPE****BOXER BRIEF****SXBB19F-FSB | S-XXL**

U2800 | C2900

FEB 15

**BLACK****BOXER BRIEF****SXBB19F-BLK | XS-XXL**

U2800 | C2900

**TRUNK****SXTR19F-BLK | XS-XXL**

U2800 | C2900

**BRIEF****SXBR19F-BLK | XS-XXL**

U2400 | C2500

**GREY HEATHER****BOXER BRIEF****SXBB19F-GHT | XS-XXL**

U2800 | C2900

**TRUNK****SXTR19F-GHT | XS-XXL**

U2800 | C2900

**BRIEF****SXBR19F-GHT | S-XXL**

U2400 | C2500



FEB 15

NEW



2 PACK

**FLORA STRIPE/BLACK**

**BOXER BRIEF**  
**SXPP2C-FSB | S-XXL**  
 U4995 | C5195



2 PACK

**BLACK/BLACK**

**BOXER BRIEF**  
**SXPP2C-BBB | S-XXL**  
 U4995 | C5195



DEC 15

**BLACK GREAT WAVE****BOXER BRIEF****SXBB19F-GRW | S-XXL**  
U2800 | C2900

FEB 15

**BLACK ICE CREAM SANDWICH****BOXER BRIEF****SXBB19F-ICB | S-XXL**  
U2800 | C2900**NAVY HAVE A TRIPPY DAY****BOXER BRIEF****SXBB19F-HTD | S-XXL**  
U2800 | C2900

FEB 15

**2 PACK****STARGAZER/BLACK****BOXER BRIEF****SXPP2C-GSB | S-XXL**  
U4995 | C5195**2 PACK****MULTI BOULDER CAMO/BLACK****BOXER BRIEF****SXPP2C-CBM | S-XXL**  
U4995 | C5195



# UNDERCOVER TEE

Taking our know-how on eliminating chafe down south, we brought Flat Out Seams™ to this super-soft undershirt for maximum comfort. Undercover is designed with a Slim Fit to easily layer with no seam-on-seam bulk (a.k.a. no irritation).

SLIM FIT

57% cotton / 38% Modal® / 5% elastane

## KEY FEATURES

- Moisture wicking
- Naturally odor resistant

Flat Out Seams™



Crew Neck



V Neck



WHITE

CREW NECK T-SHIRT  
SXTC19-WHT | S-XXL  
U3400 | C3800

V NECK T-SHIRT  
SXTV19-WHT | S-XXL  
U3400 | C3800



# VIBE

Fuss-free layering is as easy as Vibe. This best-selling style comes in a Slim Fit and is cut from a breathable, moisture-wicking fabric that's so soft you won't want to take them off. Vibe is available in our widest range of prints, so you can find a pair to suit whatever vibe you're feeling.

SLIM FIT | NO FLY

95% viscose / 5% elastane

## KEY FEATURES

- Moisture wicking
- Naturally odor resistant
- Naturally breathable

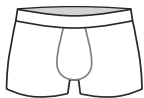
BallPark Pouch™

Three-D Fit™

Flat Out Seams™



Boxer Brief



Trunk



SXBM35-BBC



FEB 15

NEW

**BLUE CAMO FLORA**

**BOXER BRIEF**  
**SXBM35-CFB | S-XXL**  
 U3200 | C3400

NEW

**NAVY SUPER STRIPE**

**BOXER BRIEF**  
**SXBM35-SUN | S-XXL**  
 U3200 | C3400

**BLACK BEER CHAMPS**

**BOXER BRIEF**  
**SXBM35-BBC | S-XXL**  
 U3200 | C3400

**BLACK BOWTIES N BOOZE**

**BOXER BRIEF**  
**SXBM35-BBT | S-XXL**  
 U3200 | C3400

FEB 15

**BLACK TRUE NORTH**

**BOXER BRIEF**  
**SXBM35-TRN | S-XXL**  
 U3200 | C3400

**BLUE TINY MERMAID**

**BOXER BRIEF**  
**SXBM35-TIB | S-XXL**  
 U3200 | C3400

**DK INK COAST STRIPE**

**BOXER BRIEF**  
**SXBM35-ICS | S-XXL**  
 U3200 | C3400

**BLACK SPACE HIKER STRIPE**

**BOXER BRIEF**  
**SXBM35-KSH | S-XXL**  
 U3200 | C3400

FEB 15

**NAVY AMERICAN SPIRIT**

**BOXER BRIEF**  
**SXBM35-AMN | S-XXL**  
 U3200 | C3400

**NAVY ARROW**

**BOXER BRIEF**  
**SXBM35-ARN | S-XXL**  
 U3200 | C3400

**GREY BEER CHEERS**

**BOXER BRIEF**  
**SXBM35-BEC | S-XXL**  
 U3200 | C3400

**GREY SUPERSIZE CAMO**

**BOXER BRIEF**  
**SXBM35-GSC | XS-XXL**  
 U3200 | C3400

FEB 15

**NAVY TIE DYE STRIPE**

**BOXER BRIEF**  
**SXBM35-TDN | S-XXL**  
 U3200 | C3400


**RED SHALLOW STRIPE**


**BOXER BRIEF**  
**SXBM35-RSS | S-XXL**  
 U3200 | C3400

**WOODLAND CAMO**

**BOXER BRIEF**  
**SXBM35-WDL | XS-XXL**  
 U3200 | C3400

**BLACK**

 **BOXER BRIEF**  
**SXBM35-BBB | S-XXL**  
 U3200 | C3400

 **TRUNK**  
**SXTM35-BBK | XS-XXL**  
 U3200 | C3400

\*white logo



FEB 15

**GREY POP STRIPE**

**BOXER BRIEF**  
**SXBM35-POG | S-XXL**  
 U3200 | C3400



**TRUNK**  
**SXTM35-POG | XS-XXL**  
 U3200 | C3400

**BLACK COAST STRIPE**

**BOXER BRIEF**  
**SXBM35-BCO | XS-XXL**  
 U3200 | C3400



**TRUNK**  
**SXTM35-BCO | XS-XXL**  
 U3200 | C3400

**NAVY**

**BOXER BRIEF**  
**SXBM35-NVY | XS-XXL**  
 U3200 | C3400



**TRUNK**  
**SXTM35-NVY | XS-XXL**  
 U3200 | C3400

**SALT & PEPPER**

**BOXER BRIEF**  
**SXBM35-SAP | XS-XXL**  
 U3200 | C3400



**TRUNK**  
**SXTM35-SAP | XS-XXL**  
 U3200 | C3400

FEB 15

**3 PACK****BLACK/GREY/BLUE**

**BOXER BRIEF**  
**SXPP3V-CLV | S-XXL**  
 U8595 | C8995

FEB 15

NEW



2 PACK

**BLACK/BLACK**

**BOXER BRIEF**  
**SXPP2V-BBB | S-XXL**  
 U5695 | C5995



2 PACK

**BLACK/NAVY**

**BOXER BRIEF**  
**SXPP2V-BLN | S-XXL**  
 U5695 | C5995

FEB 15



2 PACK

**BLACK/GREY**

**BOXER BRIEF**  
**SXPP2V-BGP | XS-XXL**  
 U5695 | C5995



2 PACK

**BLACK/WOOD CAMO**

**BOXER BRIEF**  
**SXPP2V-WDB | S-XXL**  
 U5695 | C5995



FEB 15



2 PACK

**GREY/SHALLOW STRIPE**

**BOXER BRIEF**  
**SXPP2V-GSS | S-XXL**  
 U5695 | C5995

DEC 15

**RED KINGZILLA**

**BOXER BRIEF**  
**SXBM35-KGR | S-XXL**  
 U3200 | C3400

**DK DENIM UNITY**

**BOXER BRIEF**  
**SXBM35-DDU | S-XXL**  
 U3200 | C3400

**BLUE SUPER SUMO**

**BOXER BRIEF**  
**SXBM35-SUS | S-XXL**  
 U3200 | C3400

VALENTINE'S DAY

● **GREY YES NO MAYBE**

**BOXER BRIEF**  
**SXBM35-YNM | S-XXL**  
 U3200 | C3400

● Marketing Highlight

FEB 15

**BLACK SHRED**

**BOXER BRIEF**  
**SXBM35-SHB | S-XXL**  
 U3200 | C3400

**CHARCOAL PUCK TOOTH**

**BOXER BRIEF**  
**SXBM35-PTC | S-XXL**  
 U3200 | C3400

**NAVY EVERYDAY IS EARTHDAY**

**BOXER BRIEF**  
**SXBM35-EIE | S-XXL**  
 U3200 | C3400

**YELLOW TGI-FRIED EGG**

**BOXER BRIEF**  
**SXBM35-YTF | S-XXL**  
 U3200 | C3400

APR 15

FATHER'S DAY

**BLACK ENDANGERED**

**BOXER BRIEF**  
**SXBM35-EGB | S-XXL**  
 U3200 | C3400

● **BLUE DAD JOKE KOOZIES**

**BOXER BRIEF**  
**SXBM35-JKB | S-XXL**  
 U3200 | C3400

**BLUE PAINT CAN STRIPE**

**BOXER BRIEF**  
**SXBM35-PAC | S-XXL**  
 U3200 | C3400

**PINK DISCO JUNGLE**

**BOXER BRIEF**  
**SXBM35-DJP | S-XXL**  
 U3200 | C3400

● *Marketing Highlight*

VIBE



FEB 15



2 PACK

**TOUCAN TANGO/BLACK**

BOXER BRIEF  
SXPP2V-TTB | S-XXL  
U5695 | C5995



2 PACK

**BICYCLE/BLACK**

BOXER BRIEF  
SXPP2V-BYB | S-XXL  
U5695 | C5995

FEB 15



2 PACK

**DARK DENIM TROPICS/NAVY**

BOXER BRIEF  
SXPP2V-NTN | S-XXL  
U5695 | C5995



2 PACK

**FRUITY STRIPE/BLACK**

BOXER BRIEF  
SXPP2V-FSB | S-XXL  
U5695 | C5995



# ULTRA

Made from the same moisture-wicking material as our best-selling Vibe, Ultra comes in a Relaxed Fit - it's a bit looser around the leg - is equipped with a fly, and is designed to deliver maximum softness and breathability.

RELAXED FIT | FLY

95% viscose / 5% elastane

## KEY FEATURES

- Moisture wicking
- Naturally odor resistant
- Naturally breathable

BallPark Pouch™

Three-D Fit™

Flat Out Seams™

Boxer Brief

Trunk

Brief



SXBB30F-NBR

FEB 15

NEW

**BLACK ASTRO SURF AND TURF****BOXER BRIEF**SXBB30F-AST | S-XXL  
U3200 | C3400

NEW

**BLACK MOUNTAINSCAPE****BOXER BRIEF**SXBB30F-MOB | S-XXL  
U3200 | C3400

NEW

**NAVY VISTA STRIPE****BOXER BRIEF**SXBB30F-VSN | S-XXL  
U3200 | C3400**BLUE FOXY****BOXER BRIEF**SXBB30F-FXB | S-XXL  
U3200 | C3400

FEB 15

**BLACK CREW STRIPE****BOXER BRIEF**SXBB30F-BCP | S-XXL  
U3200 | C3400**NAVY BANNER STRIPE****BOXER BRIEF**SXBB30F-NBR | S-XXL  
U3200 | C3400**SALT & PEPPER****BOXER BRIEF**SXBB30F-SAP | XS-XXL  
U3200 | C3400

FEB 15

**BLACK**

**BOXER BRIEF**  
**SXBB30F-BBB | XS-XXL**  
 U3200 | C3400



**TRUNK**  
**SXTR30F-BBB | S-XXL**  
 U3200 | C3400



**BRIEF**  
**SXBR30F-BLA | S-XXL**  
 U2600 | C2800

\*white logo

**GRAPHITE STENCIL CAMO**

**BOXER BRIEF**  
**SXBB30F-GSC | S-XXL**  
 U3200 | C3400



**TRUNK**  
**SXTR30F-GSC | S-XXL**  
 U3200 | C3400

**INDIGO**

**BOXER BRIEF**  
**SXBB30F-IND | S-XXL**  
 U3200 | C3400



**TRUNK**  
**SXTR30F-IND | S-XXL**  
 U3200 | C3400

**NAVY**

**BRIEF**  
**SXBR30F-NVY | S-XXL**  
 U2600 | C2800

FEB 15

**3 PACK****CLASSIC ULTRA 18**

**BOXER BRIEF**  
**SXPP3U-CLU | S-XXL**  
 U8595 | C8995

FEB 15

NEW



2 PACK

**BLACK/BLACK****BOXER BRIEF**  
**SXPP2U-BBB | S-XXL**  
U5695 | C5995

2 PACK

**BLACK/NAVY****BOXER BRIEF**  
**SXPP2U-BNV | S-XXL**  
U5695 | C5995

FEB 15



2 PACK

**NAVY/PULLED PLAID****BOXER BRIEF**  
**SXPP2U-NPP | S-XXL**  
U5695 | C5995

2 PACK

**BLACK/GREY****BOXER BRIEF**  
**SXPP2U-BSP | S-XXL**  
U5695 | C5995

DEC 15

**BLUE TROPIC STORM**

**BOXER BRIEF**  
**SXBB30F-TRS | S-XXL**  
 U3200 | C3400

**GREEN SUSHI**

**BOXER BRIEF**  
**SXBB30F-SUS | S-XXL**  
 U3200 | C3400

FEB 15

**BLACK PRISM**

**BOXER BRIEF**  
**SXBB30F-PRB | S-XXL**  
 U3200 | C3400

**GREEN NO BAD DAYS**

**BOXER BRIEF**  
**SXBB30F-NGB | S-XXL**  
 U3200 | C3400

FEB 15

**GREEN ROUGHING IT**

**BOXER BRIEF**  
**SXBB30F-RGI | S-XXL**  
 U3200 | C3400

**MULTI CMY PINEAPPLE**

**BOXER BRIEF**  
**SXBB30F-YPM | S-XXL**  
 U3200 | C3400

**PINK BANANA HAMMOCK**

**BOXER BRIEF**  
**SXBB30F-BHP | S-XXL**  
 U3200 | C3400





APR 15

EARTH DAY - NATHAN MCKEE

**TEAL ORCHID**

**BOXER BRIEF**  
**SXBB30F-OET | S-XXL**  
 U3200 | C3400

**NAVY POST IT STRIPE**

**BOXER BRIEF**  
**SXBB30F-PMN | S-XXL**  
 U3200 | C3400

● **BLUE TRASH CRAB**

**BOXER BRIEF**  
**SXBB30F-TCB | S-XXL**  
 U3200 | C3400

FEB 15

**2 PACK****POST IT STRIPE/NAVY**

**BOXER BRIEF**  
**SXPP2U-POS | S-XXL**  
 U5695 | C5995

**2 PACK****COCONUT DRINKS/BLACK**

**BOXER BRIEF**  
**SXPP2U-COD | S-XXL**  
 U5695 | C5995

● *Marketing Highlight*

FEB 15



2 PACK

**ISLAND DREAM/BLACK****BOXER BRIEF****SXPP2U-IDB | S-XXL**

U5695 | C5995

APR 15

FATHER'S DAY



2 PACK

**BACK YARD BBQ/NAVY** ●**BOXER BRIEF****SXPP2U-BQN | S-XXL**

U5695 | C5995

● Marketing Highlight



# PLATINUM

The softest material we use, Modal® is the Rolls Royce of underwear fabric. The difference? Only you know you're cruising through your day in total luxury. This premium pair is easy to layer, naturally breathable and moisture wicking. With sophisticated prints, Platinum looks pretty classy too.

RELAXED FIT | FLY

95% Modal® / 5% elastane

## KEY FEATURES

- Moisture wicking
- Naturally odor resistant
- Naturally breathable

BallPark Pouch™

Three-D Fit™

Flat Out Seams™



Boxer Brief



SXBB42F-FJN

FEB 15

NEW

**BLACK VINE BATIK**

**BOXER BRIEF**  
**SXBB42F-VNB | S-XXL**  
 U3500 | C3700

**NAVY FAMILY JEWELS**

**BOXER BRIEF**  
**SXBB42F-FJN | S-XXL**  
 U3500 | C3700

**BLACK/RED TIDAL STRIPE**

**BOXER BRIEF**  
**SXBB42F-BRT | S-XXL**  
 U3500 | C3700

**BLUE MIRAGE STRIPE**

**BOXER BRIEF**  
**SXBB42F-MSB | S-XXL**  
 U3500 | C3700

FEB 15

**DK CHARCOAL HEATHER**

**BOXER BRIEF**  
**SXBB42F-DCH | S-XXL**  
 U3500 | C3700

**BLACKOUT**

**BOXER BRIEF**  
**SXBB42F-BLO | S-XXL**  
 U3500 | C3700

**NAVY KIMONO**

**BOXER BRIEF**  
**SXBB42F-KMN | S-XXL**  
 U3500 | C3700





FEB 15

**BLUE OPTIC WAVE****BOXER BRIEF****SXBB42F-OPW | S-XXL**

U3500 | C3700

**MULTI FIELD FLOWERS****BOXER BRIEF****SXBB42F-FWM | S-XXL**

U3500 | C3700





# MULTI- PACKS

Whether you're looking for Everyday, Sport, or Adventure styles, there's never been more multi-packs to choose from.



FEB 15 / CORE

NEW



2 PACK

**SUNRISE STRIPE/BLACK II**

BOXER BRIEF  
SXPP2Q-SBI | S-XXL  
U5695 | C6295



2 PACK

**BLACK/DK CHARCOAL II**

BOXER BRIEF  
SXPP2Q-BD2 | S-XXL  
U5695 | C6295

FEB 15 / CORE



2 PACK

**BLACK/GRAPHITE**

BOXER BRIEF  
SXPP2M-BGR | S-XXL  
U3995 | C4795



2 PACK

**NAVY/CITY BLUE**

BOXER BRIEF  
SXPP2M-NCT | S-XXL  
U3995 | C4795



QUEST



SPORT MESH

FEB 15 / FASHION



2 PACK

**MALIBU/NAVY**

BOXER BRIEF  
SXPP2M-MLN | S-XXL  
U3995 | C4795



2 PACK

**BLACK LIME WB/GRAPHITE**

BOXER BRIEF  
SXPP2M-LBG | S-XXL  
U3995 | C4795

FEB 15 / FASHION



2 PACK

**GRAPHITE VERMILLION WB/BLACK**

BOXER BRIEF  
SXPP2M-GVM | S-XXL  
U3995 | C4795



SPORT MESH



FEB 15 / FASHION



2 PACK

**TOURIST CAMO/BLACK**

BOXER BRIEF  
SXPP2T-TCB | XS-XXL  
U5695 | C5995



2 PACK

**PURPLE DORADO PARTAY/BLACK**

BOXER BRIEF  
SXPP2T-PDB | XS-XXL  
U5695 | C5995

FEB 15 / CORE



2 PACK

**BLACK/GREY HEATHER**

BOXER BRIEF  
SXPP2A-BGR | S-XXL  
U3995 | C4795



2 PACK

**BLACK/CITY BLUE HEATHER**

BOXER BRIEF  
SXPP2A-BRB | S-XXL  
U3995 | C4795



VOLT



DAYTRIPPER

FEB 15 / CORE



3 PACK

**BLACK**

**BOXER BRIEF**

**SXPP3B-BLK | S-XXL**

U5995 | C6995

FEB 15 / CORE



3 PACK

**NAVY**

**BOXER BRIEF**

**SXPP3B-NAVY | S-XXL**

U5995 | C6995



FEB 15 / CORE



3 PACK

**GREY HEATHER**

**BOXER BRIEF**

**SXPP3B-GRA | S-XXL**

U5995 | C6995

FEB 15 / CORE



3 PACK

**BLACK/GREY/NAVY**

**BOXER BRIEF**

**SXPP3B-BGN | S-XXL**

U5995 | C6995



**DAYTRIPPER**



FEB 15 / FASHION



2 PACK

**BOARDWALK TIE DYE/BLACK**

BOXER BRIEF  
SXPP2A-B0B | S-XXL  
U3995 | C4795



2 PACK

**SKULLGYLE/BLACK**

BOXER BRIEF  
SXPP2A-SKB | S-XXL  
U3995 | C4795

FEB 15 / CORE

NEW



2 PACK

**FLORA STRIPE/BLACK**

BOXER BRIEF  
SXPP2C-FSB | S-XXL  
U4995 | C5195



2 PACK

**BLACK/BLACK**

BOXER BRIEF  
SXPP2C-BBB | S-XXL  
U4995 | C5195

FEB 15 / FASHION



2 PACK

**STARGAZER/BLACK**  
BOXER BRIEF  
SXPP2C-GSB | S-XXL  
U4995 | C5195



2 PACK

**MULTI BOULDER CAMO/BLACK**  
BOXER BRIEF  
SXPP2C-CBM | S-XXL  
U4995 | C5195

FEB 15 / CORE



3 PACK

**BLACK/GREY/BLUE**  
BOXER BRIEF  
SXPP3V-CLV | S-XXL  
U8595 | C8995



FEB 15 / CORE

NEW



2 PACK

**BLACK/BLACK**

**BOXER BRIEF**  
SXPP2V-BBB | S-XXL  
U5695 | C5995



2 PACK

**BLACK/NAVY**

**BOXER BRIEF**  
SXPP2V-BLN | S-XXL  
U5695 | C5995

FEB 15 / CORE



2 PACK

**BLACK/GREY**

**BOXER BRIEF**  
SXPP2V-BGP | XS-XXL  
U5695 | C5995



2 PACK

**BLACK/WOOD CAMO**

**BOXER BRIEF**  
SXPP2V-WDB | S-XXL  
U5695 | C5995

FEB 15 / CORE



2 PACK

**GREY/SALLOW STRIPE**

**BOXER BRIEF**  
**SXPP2V-GSS | S-XXL**  
U5695 | C5995

FEB 15 / FASHION



2 PACK

**TOUCAN TANGO/BLACK**

**BOXER BRIEF**  
**SXPP2V-TTB | S-XXL**  
U5695 | C5995



2 PACK

**BICYCLE/BLACK**

**BOXER BRIEF**  
**SXPP2V-BYB | S-XXL**  
U5695 | C5995



VIBE

FEB 15 / FASHION



2 PACK

**DARK DENIM TROPICS/NAVY**

**BOXER BRIEF**  
**SXPP2V-NTN | S-XXL**  
U5695 | C5995



2 PACK

**FRUITY STRIPE/BLACK**

**BOXER BRIEF**  
**SXPP2V-FSB | S-XXL**  
U5695 | C5995

FEB 15 / CORE



3 PACK

**CLASSIC ULTRA 18**

**BOXER BRIEF**  
**SXPP3U-CLU | S-XXL**  
U8595 | C8995

FEB 15 / CORE

NEW



2 PACK

**BLACK/BLACK**

BOXER BRIEF  
SXPP2U-BBB | XS-XXL  
U5695 | C5995



2 PACK

**BLACK/NAVY**

BOXER BRIEF  
SXPP2U-BNV | S-XXL  
U5695 | C5995

FEB 15 / CORE



2 PACK

**NAVY/PULLED PLAID**

BOXER BRIEF  
SXPP2U-NPP | S-XXL  
U5695 | C5995



2 PACK

**BLACK/GREY**

BOXER BRIEF  
SXPP2U-BSP | S-XXL  
U5695 | C5995

FEB 15 / FASHION



2 PACK

**POST IT STRIPE/NAVY**

BOXER BRIEF  
SXPP2U-POS | S-XXL  
U5695 | C5995



2 PACK

**COCONUT DRINKS/BLACK**

BOXER BRIEF  
SXPP2U-COD | S-XXL  
U5695 | C5995

FEB 15 / FASHION



2 PACK

**ISLAND DREAM/BLACK**

BOXER BRIEF  
SXPP2U-IDB | S-XXL  
U5695 | C5995

APR 15 / FASHION



2 PACK

**BACK YARD BBQ/NAVY**

BOXER BRIEF  
SXPP2U-BQN | S-XXL  
U5695 | C5995





OH BUOY



AZURE/BLACK  
2N1 VOLLEY 5"  
SXSW03L-AZB | S-XXL



BLACK  
2N1 VOLLEY 5"  
SXSW03L-BLK | S-XXL



BLUE CUT WORK TROPICAL  
2N1 VOLLEY 5"  
SXSW03L-CWT | S-XXL



BLUE SUNBREAK  
2N1 VOLLEY 5"  
SXSW03L-SBB | S-XXL



GREEN NO BAD DAYS  
2N1 VOLLEY 5"  
SXSW03L-NGB | S-XXL



YELLOW REMOTE ISLAND  
2N1 VOLLEY 5"  
SXSW03L-YRM | S-XXL



AZURE/BLACK  
2N1 VOLLEY 7"  
SXSW04L-AZB | S-XXL



BLACK  
2N1 VOLLEY 7"  
SXSW04L-BLK | S-XXL



BLUE DAWN PATROL  
2N1 VOLLEY 7"  
SXSW04L-DPB | S-XXL



FIJI ASTRO SURF AND TURF  
2N1 VOLLEY 7"  
SXSW04L-FST | S-XXL



MULTI RIPPED CAMO  
2N1 VOLLEY 7"  
SXSW04L-RCM | S-XXL



NAVY CHOMPERS  
2N1 VOLLEY 7"  
SXSW04L-CHN | S-XXL



PINK DISCO JUNGLE  
2N1 VOLLEY 7"  
SXSW04L-DJP | S-XXL

BETAWAVE



BLACK  
2N1 BOARDIE 17"  
SXSW01L-BLK | 28-40



GREEN JUNGLE CAMO  
2N1 BOARDIE 17"  
SXSW01L-GJC | 28-40



AZURE/TWILIGHT  
2N1 BOARDIE 17"  
SXSW01L-AZT | 28-40



BLACK FLIP FLOP STRIPE  
2N1 BOARDIE 17"  
SXSW01L-FFB | 28-40

BETA WAVE



BLUE ASTRO SURF & TURF  
2N1 BOARDIE 17"  
SXSW01L-ASB | 28-40



BLUE DISCO JUNGLE  
2N1 BOARDIE 17"  
SXSW01L-DJB | 28-40



BLACK  
2N1 BOARDIE 19"  
SXSW02L-BLK | 28-40



MULTI SUPER STRIPE  
2N1 BOARDIE 19"  
SXSW02L-MSS | 28-40



BLACK WAVE STREAK  
2N1 BOARDIE 19"  
SXSW02L-WBS | 28-40



RED HIBISCUS  
2N1 BOARDIE 19"  
SXSW02L-HBR | 28-40



TWILIGHT/AZURE  
2N1 BOARDIE 19"  
SXSW02L-TWA | 28-40



BLUE RIDING GIANTS  
2N1 BOARDIE 19"  
SXSW02L-BRG | 28-40

HOT SHOT



BLACK HEATHER  
BOXER BRIEF  
SXBB09F-BLH | S-XXL



DARK DENIM HEATHER  
BOXER BRIEF  
SXBB09F-DDH | S-XXL



NAVY POLAR BEAR  
RESORTWEAR  
BOXER BRIEF  
SXBB09F-PBR | S-XXL



ORANGE BLAZE HEATHER  
BOXER BRIEF  
SXBB09F-OBH | S-XXL



BLUE ICEBERG STRIPE  
BOXER BRIEF  
SXBB09F-IBS | S-XXL



MULTI TIDAL WAVE  
BOXER BRIEF  
SXBB09F-MTW | S-XXL

HOT SHOT



BLACK HEATHER  
SHORT SLEEVE  
SXSC09-BLH | S-XXL



MALIBU HEATHER  
SHORT SLEEVE  
SXSC09-MBH | S-XXL



ORANGE BLAZE HEATHER  
SHORT SLEEVE  
SXSC09-OBH | S-XXL

QUEST



BLACK MOUNTAINSCAPE  
BOXER BRIEF  
SXBB70F-MOB | S-XXL



MIDNIGHT BLUE II  
BOXER BRIEF  
SXBB70F-MB2 | XS-XXL



GREY GRIZZLY GRAIN  
BOXER BRIEF  
SXBB70F-GGG | XS-XXL



BLUE CUT WORK TROPICAL  
BOXER BRIEF  
SXBB70F-CWT | S-XXL



GREEN SUNRISE STRIPE  
BOXER BRIEF  
SXBB70F-GSS | S-XXL



PINK SAIL AWAY  
BOXER BRIEF  
SXBB70F-SPW | S-XXL



BLACK II  
BOXER BRIEF  
SXBB70F-BL2 | XS-XXL



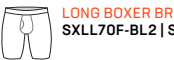
DARK CHARCOAL II  
BOXER BRIEF  
SXBB70F-DC2 | XS-XXL



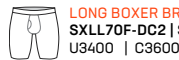
2 PACK  
SUNRISE STRIPE/BLACK II  
BOXER BRIEF  
SXPP2Q-SBI | S-XXL



2 PACK  
BLACK/DK CHARCOAL II  
BOXER BRIEF  
SXPP2Q-BD2 | S-XXL



LONG BOXER BRIEF  
SXLL70F-BL2 | S-XXL



LONG BOXER BRIEF  
SXLL70F-DC2 | S-XXL  
U3400 | C3600

PILOT



BLACK  
2N1 SHORT  
SXRU29-BLK | S-XXL



DARK DENIM  
2N1 SHORT  
SXRU29-DDN | S-XXL



BLACK  
2N1 SHORT  
SXKS27-BLK | S-XXL



DARK CHARCOAL  
2N1 SHORT  
SXKS27-DCH | S-XXL



VELVET BLUE  
2N1 SHORT  
SXKS27-BSH | S-XXL

KINETIC TRAIN



BLACKOUT  
2N1 SHORT  
SXGS28-BLO | S-XXL



DARK CHARCOAL  
2N1 SHORT  
SXGS28-DCH | S-XXL



VELVET BLUE  
2N1 SHORT  
SXGS28-BSH | S-XXL

SPORT MESH



BLACK  
BOXER BRIEF  
SXBB12F-BLK | XS-XXL



GRAPHITE  
BOXER BRIEF  
SXBB12F-GRA | XS-XXL



2 PACK

BLACK/GRAPHITE  
BOXER BRIEF  
SXPP2M-BGR | S-XXL



2 PACK

NAVY/CITY BLUE  
BOXER BRIEF  
SXPP2M-NCT | S-XXL





SPORT MESH



2 PACK

**MALIBU/NAVY**  
**BOXER BRIEF**  
SXPP2M-MLN | S-XXL



2 PACK

**BLACK LIME WB/  
GRAPHITE**  
**BOXER BRIEF**  
SXPP2M-LBG | S-XXL



2 PACK

**GRAPHITE VERMILLION  
WB/BLACK**  
**BOXER BRIEF**  
SXPP2M-GVM | S-XXL

VOLT



**CHOMPERS**  
**BOXER BRIEF**  
SXBB29-CHO | XS-XXL

**HAZY CAMO**  
**BOXER BRIEF**  
SXBB29-HZC | XS-XXL

**ARMCHAIR QUARTERBACK**  
**BOXER BRIEF**  
SXBB29-ACQ | XS-XXL

**AMERICAN PILSNER**  
**BOXER BRIEF**  
SXBB29-AMP | XS-XXL

**CANADIAN LAGER**  
**BOXER BRIEF**  
SXBB29-CDL | XS-XXL

**SPORT NUT**  
**BOXER BRIEF**  
SXBB29-SPN | XS-XXL

**BIG SURF**  
**BOXER BRIEF**  
SXBB29-SUB | XS-XXL



**FIGHTING FISH**  
**BOXER BRIEF**  
SXBB29-FGF | XS-XXL

**BLUE DORADO PARTAY**  
**BOXER BRIEF**  
SXBB29-DPB | XS-XXL

**GOING BANANAS**  
**BOXER BRIEF**  
SXBB29-GQB | XS-XXL

**FLOATIE SNACKS**  
**BOXER BRIEF**  
SXBB29-FLN | XS-XXL

**PINEAPPLE EXPRESS**  
**BOXER BRIEF**  
SXBB29-PNE | XS-XXL



**GRADIENT LANDSCAPE**  
**BOXER BRIEF**  
SXBB29-GRL | XS-XXL

**MIRROR LAKE**  
**BOXER BRIEF**  
SXBB29-MIL | XS-XXL

**RIDING GIANTS**  
**BOXER BRIEF**  
SXBB29-RDG | XS-XXL



2 PACK

**TOURIST CAMO/BLACK**  
**BOXER BRIEF**  
SXPP2T-TCB | S-XXL



2 PACK

**PURPLE DORADO PARTAY/  
BLACK**  
**BOXER BRIEF**  
SXPP2T-PDB | S-XXL

KINETIC HD



BLACK/VERMILLION  
BOXER BRIEF  
SXBB32-BVR | S-XXL



BLACKOUT  
BOXER BRIEF  
SXBB32-BLO | XS-XXL



GREY FEED STRIPE  
BOXER BRIEF  
SXBB32-GFS | S-XXL



NAVY/CITY BLUE  
BOXER BRIEF  
SXBB32-CIN | S-XXL



RED  
BOXER BRIEF  
SXBB32-RED | S-XXL



BLACK  
LONG BOXER BRIEF  
SXLL32-BLO | S-XXL



BLACK STATIC LANDSCAPE  
BOXER BRIEF  
SXBB32-SLB | S-XXL

LONG BOXER BRIEF  
SXLL32-SLB | S-XXL



BLUE SKY EXPLOSION  
BOXER BRIEF  
SXBB32-SBE | S-XXL



LONG BOXER BRIEF  
SXLL32-SBE | S-XXL

HYPERDRIVE



BLACKOUT  
LONG BOXER BRIEF  
SXLL29-BLO | XS-XXL

AERATOR



BLACK WASHED STRIPE  
SHORT SLEEVE  
SXST14-WSB | S-XXL  
LONG SLEEVE  
SXLC14-WSB | S-XXL



RACER BLUE HEATHER  
SHORT SLEEVE  
SXST14-RBH | S-XXL  
LONG SLEEVE  
SXLC14-RBH | S-XXL



FIJI HEATHER  
SHORT SLEEVE  
SXST14-FJH | S-XXL  
LONG SLEEVE  
SXLC14-FJH | S-XXL

DAYTRIPPER



BLACK OPS CAMO  
BOXER BRIEF  
SXBB11F-OCB | S-XXL



BLUE SPORTCORE STRIPE  
BOXER BRIEF  
SXBB11F-SBT | XS-XXL



BLACK  
BOXER BRIEF  
SXBB11F-BLK | XS-XXL



BLACK POLKA CAMO  
BOXER BRIEF  
SXBB11F-PBC | S-XXL



GREY HEATHER  
BOXER BRIEF  
SXBB11F-GRA | S-XXL



NAVY HEATHER  
BOXER BRIEF  
SXBB11F-NVY | XS-XXL

DAYTRIPPER



2 PACK

BLACK/GREY HEATHER  
BOXER BRIEF  
SXPP2A-BGR | S-XXL



2 PACK

BLACK/CITY BLUE HEATHER  
BOXER BRIEF  
SXPP2A-BRB | S-XXL



3 PACK

BLACK  
BOXER BRIEF  
SXPP3B-BLK | S-XXL



3 PACK

NAVY  
BOXER BRIEF  
SXPP3B-NVY | S-XXL



3 PACK

GREY HEATHER  
BOXER BRIEF  
SXPP3B-GRA | S-XXL



3 PACK

BLACK/GREY/NAVY  
BOXER BRIEF  
SXPP3B-BGN | S-XXL

BLUE POP DOG  
BOXER BRIEF  
SXBB11F-PDB | S-XXL

MULTI DAZED & CONFUSED  
BOXER BRIEF  
SXBB11F-DZM | S-XXL

NAVY DEATH VALLEY CAMO  
BOXER BRIEF  
SXBB11F-DVN | S-XXL

TEAL VAPORWAVE CHEETAH  
BOXER BRIEF  
SXBB11F-VCT | S-XXL



MULTI MIAMI NICE  
BOXER BRIEF  
SXBB11F-MNM | S-XXL

YELLOW PEACENIK  
BOXER BRIEF  
SXBB11F-PCY | S-XXL



2 PACK

BOARDWALK TIE DYE/BLACK  
BOXER BRIEF  
SXPP2A-BOB | S-XXL



2 PACK

SKULLGYLE/BLACK  
BOXER BRIEF  
SXPP2A-SKB | S-XXL

UNDERCOVER



BLACK BOULDER CAMO  
BOXER BRIEF  
SXBB19F-BOC | S-XXL



BLACK REFLECTIVE STRIPE  
BOXER BRIEF  
SXBB19F-RSB | S-XXL



BLUE FLAG STRIPE  
BOXER BRIEF  
SXBB19F-FSB | S-XXL



BLACK  
BOXER BRIEF  
SXBB19F-BLK | XS-XXL



TRUNK  
SXTR19F-BLK | XS-XXL



BRIEF  
SXBR19F-BLK | XS-XXL



GREY HEATHER  
BOXER BRIEF  
SXBB19F-GHT | XS-XXL



TRUNK  
SXTR19F-GHT | XS-XXL



BRIEF  
SXBR19F-GHT | S-XXL



2 PACK

FLORA STRIPE/BLACK  
BOXER BRIEF  
SXPP2C-FSB | S-XXL



2 PACK

BLACK/BLACK  
BOXER BRIEF  
SXPP2C-BBB | S-XXL



BLACK GREAT WAVE  
BOXER BRIEF  
SXBB19F-GRW | S-XXL



BLACK ICE CREAM SANDWICH  
BOXER BRIEF  
SXBB19F-ICB | S-XXL



NAVY HAVE A TRIPPY DAY  
BOXER BRIEF  
SXBB19F-HTD | S-XXL



2 PACK

STARGAZER/BLACK  
BOXER BRIEF  
SXPP2C-GSB | S-XXL



2 PACK

MULTI BOULDER CAMO/  
BLACK  
BOXER BRIEF  
SXPP2C-CBM | S-XXL



UNDERCOVER TEE



WHITE



CREW NECK  
SXTC19-WHT | S-XXL



V NECK  
SXTV19-WHT | S-XXL





BLUE CAMO FLORA  
 BOXER BRIEF  
 SXBM35-CFB | S-XXL



NAVY SUPER STRIPE  
 BOXER BRIEF  
 SXBM35-SUN | S-XXL



BLACK BEER CHAMPS  
 BOXER BRIEF  
 SXBM35-BBC | S-XXL



BLACK BOWTIES N BOOZE  
 BOXER BRIEF  
 SXBM35-BBT | S-XXL



BLACK TRUE NORTH  
 BOXER BRIEF  
 SXBM35-TRN | S-XXL



BLUE TINY MERMAID  
 BOXER BRIEF  
 SXBM35-TIB | S-XXL



DK INK COAST STRIPE  
 BOXER BRIEF  
 SXBM35-ICS | S-XXL



BLACK SPACE HIKER STRIPE  
 BOXER BRIEF  
 SXBM35-KSH | S-XXL



NAVY AMERICAN SPIRIT  
 BOXER BRIEF  
 SXBM35-AMN | S-XXL



NAVY ARROW  
 BOXER BRIEF  
 SXBM35-ARN | S-XXL



GREY BEER CHEERS  
 BOXER BRIEF  
 SXBM35-BEC | S-XXL



GREY SUPERSIZE CAMO  
 BOXER BRIEF  
 SXBM35-GSC | XS-XXL



NAVY TIE DYE STRIPE  
 BOXER BRIEF  
 SXBM35-TDN | S-XXL



RED SHALLOW STRIPE  
 BOXER BRIEF  
 SXBM35-RSS | S-XXL



WOODLAND CAMO  
 BOXER BRIEF  
 SXBM35-WDL | XS-XXL



BLACK  
 BOXER BRIEF  
 SXBM35-BBB | XS-XXL



GREY POP STRIPE  
 BOXER BRIEF  
 SXBM35-POG | S-XXL



BLACK COAST STRIPE  
 BOXER BRIEF  
 SXBM35-BCO | XS-XXL



NAVY  
 BOXER BRIEF  
 SXBM35-NVY | XS-XXL



SALT & PEPPER  
 BOXER BRIEF  
 SXBM35-SAP | XS-XXL



TRUNK  
 SXTM35-BBK | XS-XXL



TRUNK  
 SXTM35-POG | XS-XXL



TRUNK  
 SXTM35-BCO | XS-XXL



TRUNK  
 SXTM35-NVY | XS-XXL



TRUNK  
 SXTM35-SAP | XS-XXL

\*white logo



3 PACK

BLACK/GREY/BLUE  
 BOXER BRIEF  
 SXPP3V-CLV | S-XXL



2 PACK

BLACK/BLACK  
 BOXER BRIEF  
 SXPP2V-BBB | S-XXL



2 PACK

BLACK/NAVY  
 BOXER BRIEF  
 SXPP2V-BLN | S-XXL





2 PACK

BLACK/GREY  
BOXER BRIEF  
SXPP2V-BGP | XS-XXL



2 PACK

BLACK/WOOD CAMO  
BOXER BRIEF  
SXPP2V-WDB | S-XXL



2 PACK

GREY/SHALLOW STRIPE  
BOXER BRIEF  
SXPP2V-GSS | S-XXL



RED KINGZILLA  
BOXER BRIEF  
SXB35-KGR | S-XXL



DK DENIM UNITY  
BOXER BRIEF  
SXB35-DDU | S-XXL



BLUE SUPER SUMO  
BOXER BRIEF  
SXB35-SUS | S-XXL



GREY YES NO MAYBE  
BOXER BRIEF  
SXB35-YNM | S-XXL



BLACK SHRED  
BOXER BRIEF  
SXB35-SHB | S-XXL



CHARCOAL PUCK TOOTH  
BOXER BRIEF  
SXB35-PTC | S-XXL



NAVY EVERYDAY IS EARTHDAY  
BOXER BRIEF  
SXB35-EIE | S-XXL



YELLOW TGI-FRIED EGG  
BOXER BRIEF  
SXB35-YTF | S-XXL



BLACK ENDANGERED  
BOXER BRIEF  
SXB35-EGB | S-XXL



BLUE DAD JOKE KOOZIES  
BOXER BRIEF  
SXB35-JKB | S-XXL



BLUE PAINT CAN STRIPE  
BOXER BRIEF  
SXB35-PAC | S-XXL



PINK DISCO JUNGLE  
BOXER BRIEF  
SXB35-DJP | S-XXL



2 PACK

TOUCAN TANGO/BLACK  
BOXER BRIEF  
SXPP2V-TTB | S-XXL



2 PACK

BICYCLE/BLACK  
BOXER BRIEF  
SXPP2V-BYB | S-XXL



2 PACK

DARK DENIM TROPICS/NAVY  
BOXER BRIEF  
SXPP2V-NTN | S-XXL



2 PACK

FRUITY STRIPE/BLACK  
BOXER BRIEF  
SXPP2V-FSB | S-XXL



ULTRA



BLACK ASTRO SURF AND TURF  
BOXER BRIEF  
SXBB30F-AST | S-XXL



BLACK MOUNTAINSCAPE  
BOXER BRIEF  
SXBB30F-MQB | S-XXL



NAVY VISTA STRIPE  
BOXER BRIEF  
SXBB30F-VSN | S-XXL



BLUE FOXY  
BOXER BRIEF  
SXBB30F-FXB | S-XXL



BLACK CREW STRIPE  
BOXER BRIEF  
SXBB30F-BCP | S-XXL



NAVY BANNER STRIPE  
BOXER BRIEF  
SXBB30F-NBR | S-XXL



SALT & PEPPER  
BOXER BRIEF  
SXBB30F-SAP | XS-XXL



3 PACK

CLASSIC ULTRA 18  
BOXER BRIEF  
SXPP3U-CLU | S-XXL



NAVY  
BRIEF  
SXBR30F-NVY | S-XXL



GRAPHITE STENCIL CAMO  
BOXER BRIEF  
SXBB30F-GSC | S-XXL



INDIGO  
BOXER BRIEF  
SXBB30F-IND | S-XXL



BLACK  
BOXER BRIEF  
SXBB30F-BBB | XS-XXL

TRUNK  
SXTR30F-GSC | S-XXL

TRUNK  
SXTR30F-IND | S-XXL

TRUNK  
SXTR30F-BBB | S-XXL

BRIEF  
SXBR30F-BLA | S-XXL

\*white logo



2 PACK

BLACK/BLACK  
BOXER BRIEF  
SXPP2U-BBB | S-XXL



2 PACK

BLACK/NAVY  
BOXER BRIEF  
SXPP2U-BNV | S-XXL



2 PACK

BLACK/GREY  
BOXER BRIEF  
SXPP2U-BSP | S-XXL



2 PACK

NAVY/PULLED PLAID  
BOXER BRIEF  
SXPP2U-NPP | S-XXL



BLUE TROPIC STORM  
BOXER BRIEF  
SXBB30F-TRS | S-XXL



GREEN SUSHI  
BOXER BRIEF  
SXBB30F-SUS | S-XXL



BLACK PRISM  
BOXER BRIEF  
SXBB30F-PRB | S-XXL

ULTRA



GREEN NO BAD DAYS  
BOXER BRIEF  
SXBB30F-NGB | S-XXL



GREEN ROUGHING IT  
BOXER BRIEF  
SXBB30F-RGI | S-XXL



MULTI CMYK PINEAPPLE  
BOXER BRIEF  
SXBB30F-YPM | S-XXL



PINK BANANA HAMMOCK  
BOXER BRIEF  
SXBB30F-BHP | S-XXL



TEAL ORCHID  
BOXER BRIEF  
SXBB30F-OET | S-XXL



NAVY POST IT STRIPE  
BOXER BRIEF  
SXBB30F-PMN | S-XXL



BLUE TRASH CRAB  
BOXER BRIEF  
SXBB30F-TCB | S-XXL



2 PACK

POST IT STRIPE/NAVY  
BOXER BRIEF  
SXPP2U-POS | S-XXL



2 PACK

COCONUT DRINKS/BLACK  
BOXER BRIEF  
SXPP2U-COD | S-XXL



2 PACK

ISLAND DREAM/BLACK  
BOXER BRIEF  
SXPP2U-IDB | S-XXL



2 PACK

BACK YARD BBQ/NAVY  
BOXER BRIEF  
SXPP2U-BQN | S-XXL



PLATINUM



BLACK VINE BATIK  
BOXER BRIEF  
SXBB42F-VNB | S-XXL



NAVY FAMILY JEWELS  
BOXER BRIEF  
SXBB42F-FJN | S-XXL



BLACK/RED TIDAL STRIPE  
BOXER BRIEF  
SXBB42F-BRT | S-XXL



BLUE MIRAGE STRIPE  
BOXER BRIEF  
SXBB42F-MSB | S-XXL



DK CHARCOAL HEATHER  
BOXER BRIEF  
SXBB42F-DCH | S-XXL



BLACKOUT  
BOXER BRIEF  
SXBB42F-BLO | S-XXL



NAVY KIMONO  
BOXER BRIEF  
SXBB42F-KMN | S-XXL



BLUE OPTIC WAVE  
BOXER BRIEF  
SXBB42F-OPW | S-XXL



MULTI FIELD FLOWERS  
BOXER BRIEF  
SXBB42F-FWM | S-XXL

# ***FIT GUIDE***

---

## **FIT**

### **LOOSE**

Airy, with ample room around the leg; a modern take on the traditional boxer.

### **RELAXED**

Slightly looser than our Slim: form-fitting around the waistband, opens up near the leg.

### **SLIM**

Form-fitting for easy layering; slightly slimming through the butt and thighs.

### **SEMI-COMPRESSION**

Hybrid performance fit: hugs the body but is never restrictive.

### **COMPRESSION**

Second-skin feeling for before, during and after activity.

LOOSE

TIGHT

## **SILHOUETTE**

### **BRIEF**



### **TRUNK**



3" INSEAM



SKU GUIDE

SXBB30F – BLK

SAXX	FIT	FLY	COLOR
	STYLE		

SIZE

	XS	S	M	L	XL	XXL
IN	28-29	30-32	33-35	36-38	39-42	43-46
CM	71-74	76-82	84-89	91-97	99-107	109-117

BOXER BRIEF



BOXER



LONG BOXER BRIEF





# FABRICS & FEATURES

## UNDERCOVER

57% cotton / 38% Modal® / 5% elastane

With a breathable, soft hand-feel that gets better with every wash, this technical fabric has been enhanced with natural features.

- Breathable cotton-Modal® blend
- Naturally odor resistant
- Moisture wicking

## VIBE, ULTRA

95% viscose / 5% elastane

This naturally wicking, breathable fabric is an everyday alternative to cotton, but with a softer, lighter drape.

- Moisture wicking
- Breathable

## PLATINUM

95% Modal® / 5% elastane

One of the softest fabrics we use, Modal® is sourced from European beechwood; 4-way stretch for flexibility and shape retention.

- Premium Modal® fabric
- Moisture wicking
- Breathable

## DAYTRIPPER

97% polyester / 3% elastane

This synthetic fabric offers a soft natural hand while also providing functional qualities such as moisture-wicking, odor-resistance and lightweight durability.

- Moisture wicking
- Odor resistant

## KINETIC HD

88% nylon / 12% elastane

GFS: 59% nylon / 28% polyester / 13% elastane

This stretch micro-mesh has remarkable breathability along with 4-way stretch to provide firm support while keeping you completely free to move.

- Semi-compression
- Odor resistant
- Moisture wicking
- Quick dry

## HYPERDRIVE

80% nylon / 20% elastane

This midweight performance mesh is moisture wicking and odor resistant, providing guys with comfort and durability.

- Compression
- Moisture wicking
- Odor resistant
- Midweight

## AERATOR

100% polyester

This performance fabric provides great stretch without any spandex. Lightweight, breathable and odor resistant.

- Moisture wicking
- Breathable pin-dot mesh
- Odor resistant
- Quick dry

## VOLT

88% polyester / 12% elastane

This breathable micro-mesh combines lightweight support and super-soft comfort while delivering prints in photographic detail.

- Sublimation printing process
- Odor resistant
- Moisture wicking
- Breathable

## SPORT MESH

89% polyester / 11% elastane

This lightweight micro-mesh is firmly anchored in performance, combining breathability and a super-soft hand feel, intended for aerobic, but low impact, sport activities.

- Moisture wicking
- Odor resistant
- Breathable

## PILOT

Shell: 100% polyester

Liner: 77% nylon / 14% elastane / 9% polyester

A feather light mechanical stretch woven shell that delivers the ultimate in comfort for the trail, track or treadmill. The micro-mesh liner is highly breathable with moisture wicking, and odor resistance.

Shell:

- 2-way mechanical stretch
- Feather weight
- Quick dry

Quest Liner:

- 4-way stretch
- Quick dry micro-mesh
- Moisture wicking
- Odor resistant

**KINETIC SPORT & KINETIC TRAIN**

Shell: 100% polyester  
Liner: 90% nylon / 10% elastane

A super-light mechanical stretch woven shell that delivers maximum comfort in a range of sport and training activities. A 4-way stretch micro-mesh liner provides semi-compression support, breathability, and odor resistance.

Shell:

- 2-way mechanical stretch micro-check
- Super-lightweight
- Quick dry

Kinetic Liner:

- 4-way semi-compression stretch
- Moisture wicking
- Breathable micro-mesh
- Odor resistant

**BETA WAVE & OH BUOY**

Shell: 88% polyester / 12% elastane  
Liner: 87% polyester / 13% elastane

A lightweight 4-way stretch woven shell in a range of colorful prints and solids that look great wear after wear. An ultra-lightweight stretch mesh liner delivers extra support, breathability, quick dry, and odor resistance.

Shell:

- Fade-resistant to chlorine & saltwater
- 4-way stretch
- Quick dry

Kinetic Liner:

- 4-way stretch
- Quick drain & dry
- Odor resistant

**HOT SHOT**

85% recycled polyester / 15% elastane  
Insets: 88% polyester / 12% elastane

A unique mesh stripe fabric construction that delivers exceptionally breathable, quick-dry technology that amplifies your body's natural evaporative cooling capacity. All-over mesh insets enhance airflow in high heat zones.

- DropTemp™ Cooling technology
- Moisture wicking
- Quick dry
- Breathable
- Odor resistant

**QUEST**

77% nylon / 14% elastane / 9% polyester

Micro dots of spandex with polyester edges pierce this nylon fabric for Quick dry breathability.

- Pin-dot mesh construction
- Odor resistant
- Lightweight
- Quick dry

**GENERAL CARE**



**MACHINE WASH COLD, GENTLE CYCLE.**



**TUMBLE DRY LOW.**



**ONLY NON-CHLORINE BLEACH WHEN NEEDED.**



**IRON LOW.**

# DISPLAYS

Please contact your rep for ordering details.

## LARGE FLOOR DISPLAY

Options: LCD screen, hang bar

Included: shelf

Holds up to 260 units.

W 39" x H 62" x D 18"

SKU: SAXXLRGDSPLY

Accessory Side Panel to hang product

SKU: SAXXMLACCPAN



## MEDIUM FLOOR DISPLAY

Options: hang bar

Included: shelf

Holds up to 180 units.

W 25.5" x H 62" x D 18"

SKU: SAXXMEDDSPLY

Accessory Side Panel to hang product

SKU: SAXXMLACCPAN



## SMALL FLOOR DISPLAY

Included: hang bar, 2 waterfall & 2 face out pegs

Holds up to 130 units when using side pegs.

W 14" x H 60.5" x D 20"

SKU: SAXX4WAYSM



## COUNTERTOP DISPLAY

Holds 60 units.

W 24" x H 17" x D 11.5"

SKU: SXCOUNTERTOP



## HANG BAR

Display product on hang bar to help increase sell through. Fits medium and large floor displays. Also works with slat wall.

SKU: SAXXHANGBAR



## SHELF

Included with medium and large floor displays. Shelf holds 7 units with body form or 35 units without. Also works with slat wall.

SKU: SAXXBOXASSLY

#### 4 WAY DISPLAY

Options: accessory packs to allow for customizing.

Units: depends on configuration

SKU: SAXX4WAYME

#### 4 WAY DISPLAY ACCESSORIES

##### Short hang bar

SKU: SAXXSMHANG

##### Hooks for short hang bar

SKU: SAXXMLHOOK

##### Extending hang bar to hang apparel

SKU: SAXX4WYMACP1



#### SHELF TALKER

Includes generic lifestyle & tech graphic. Seasonal and campaign graphics throughout the year.

SKU: SHEFTALKR16

#### SHELF TALKER GRAPHIC

English: SP19STGRE

French: SP19STGRF



#### SLAT WALL HEADER

W 20" x H 8.79"

Use with slot wall accessories to complete your SAXX slot wall display.

SKU: SAXXSLATHED

#### GRAPHIC HOLDER

W 22" x H 8"

Included with medium & large floor displays.

Use with slot wall accessories to add pop to a slot wall display. Graphic not included.

SKU: SAXXMLGRHOLD

#### LOGO BLOCK

W 11" x H 6.85"  
Double-sided

SKU: SAXXLOGOBK



#### DEALER WINDOW DECAL

W 8.5" x H 3.75"

SKU: DEALERSTICKER

#### ATHELETE STICKER

SKU: SAXXATHSTK16

SAXX



#### BODY FORM

Fits a medium-sized boxer brief. Does not ship with a display pair.

SKU: SAXXBODYFM19



#### HANGER

SKU: SAXXHANGER19

#### SLAT WALL PEGS

Hold up to 6 boxed units. Use with other slot wall accessories to display boxed product.

SKU: SAXXSLATPEG



#### SLAT WALL WATERFALL & FACE OUT PEGS

Holds 5 to 8 pairs.

Use with slot wall accessories to display out-of-box, hung product.

SKU:

Waterfall: SXFXWATERFL  
Face out: SXFXFACEOUT





/ saxxunderwear | saxxunderwear.com | sales@saxxunderwear.com  
TEL: 1 888 409 SAXX (7299) | FAX: 1 888 401 7299

